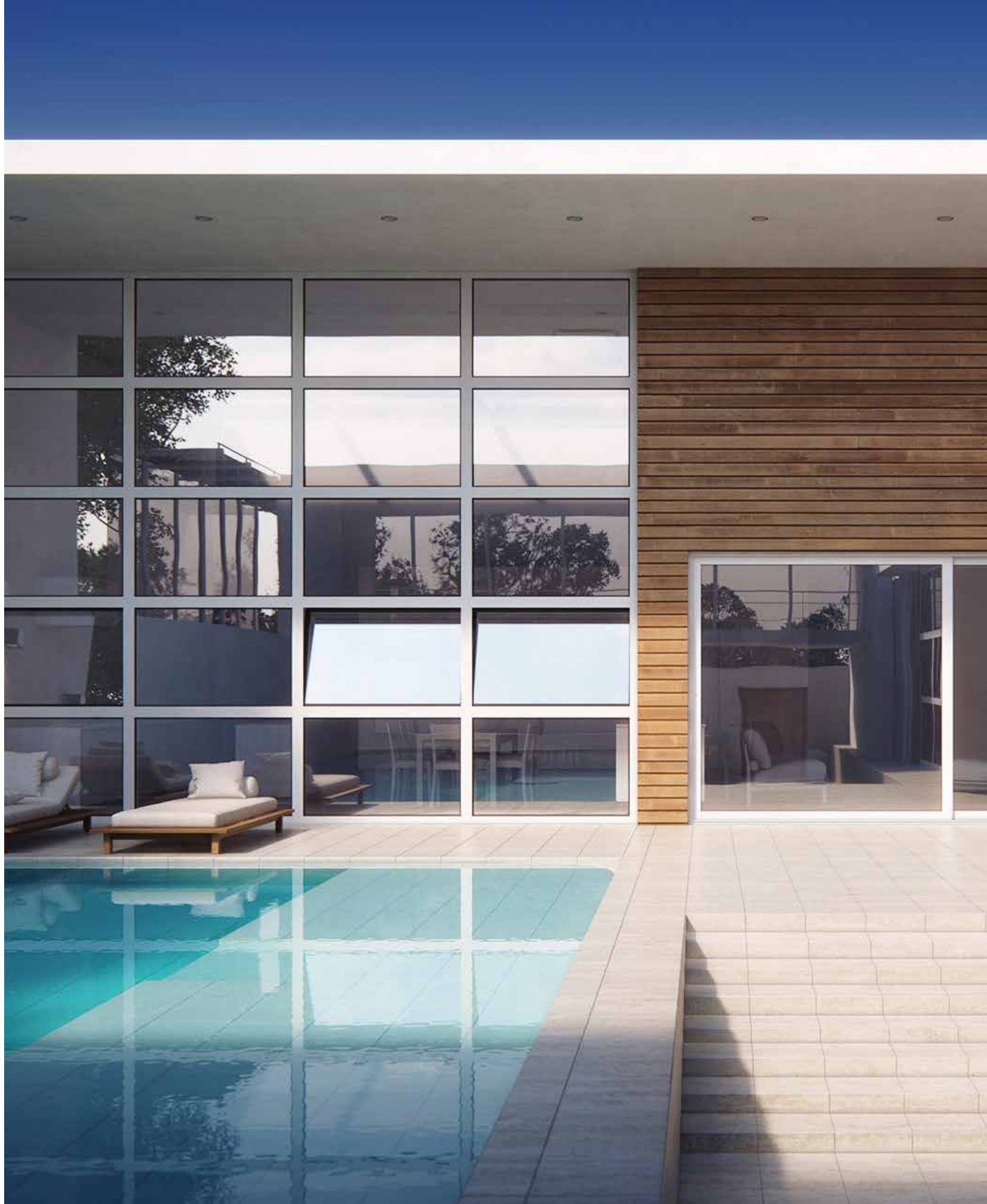


W450HS

Tilt & Turn Thermal Insulating System

for an exceptional aesthetic result.



System Identity

The system W450 HS fully safeguards the sense of simplicity, pure and elegant aesthetic effect.

Reference point is the use of the least possible visible aluminum which gives the system a sense of grandeur.

The muscular appearance confirms the dynamic orientation of the series and the attention to detail is reflected, in addition to aesthetics, to the practicality and usability of the system.

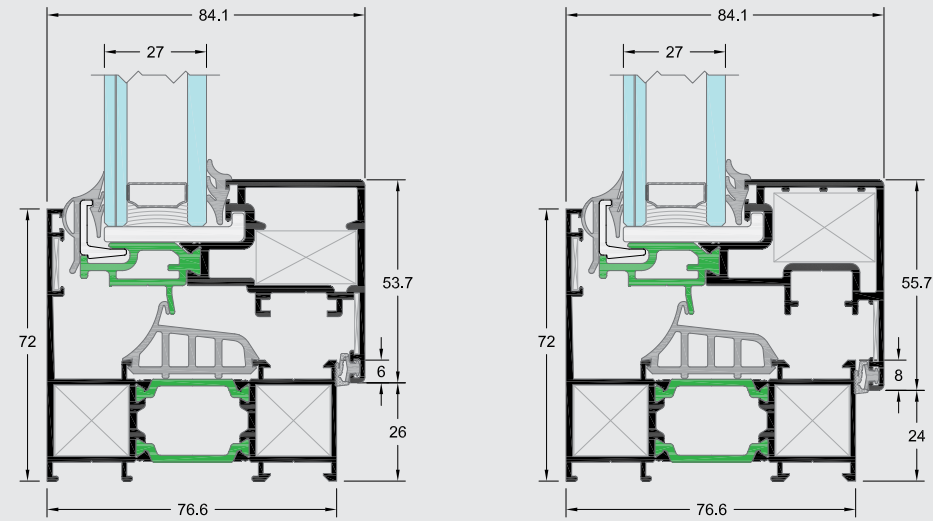
Features & Benefits

- Hidden sash with frame height 72 mm
- Use of glass reinforced polyamides (PA66 GF25) 31.8 mm
- High thermal insulation
- Frameless hinged robust constructions of special design

Configurations

Casement-awning windows

1Leaf - 2Leaf & 1Leaf with fixed



HARDWARE

CAMERA	CE	ALU 16
--------	----	--------

POLYAMIDES mm

	31.8	31.8
--	------	------

SYSTEM PROFILE DIMENSIONS

MIN FRAME DEPTH mm	76.6	76.6
MIN FACE HEIGHT mm	72 OUT / 79.7 IN	72 OUT / 79.7 IN
GLASS THICKNESS mm	28	28

CONSTRUCTION DIMENSIONS

SASH WIDTH mm	365-1600	360-1490
SASH HEIGHT mm	360-2400	450-2360
MAX. SASH DIMENSIONS mm (WxH)	1600x2100 / 1300x2400	1490x2100 / 1300x2360
MAX. SASH WEIGHT mm Kgr	130, 150*, 200**	130, 150*, 200**

CERTIFICATES/PERFORMANCES

AIR PERMEABILITY EN 12207	N/A	Class 4
WATER TIGHTNESS EN 12208	N/A	Class 7A
RESISTANCE TO WIND LOAD EN 12210	N/A	Class B4
BURGLAR RESISTANCE	N/A	N/A
SOUND REDUCTION Rw EN 140-3	N/A	N/A
THERMAL INSULATION Uf EN ISO 10077-2	Uf=1.6-2.8 W/m²K	Uf=1.6-2.8 W/m²K

*Reinforced Tilt and Turn | **Hinged with heavy duty hinges



FLAT



Rate of Insulation

Uw=1.76 W/m²K

Thermal conductivity coefficient has calculated for the construction:

1600x2200 with Ug=1.1 W/m²K

Glass type: 3+3 /16(ARGON)/5